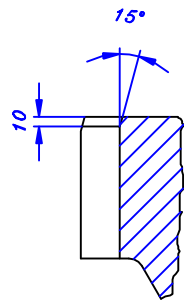
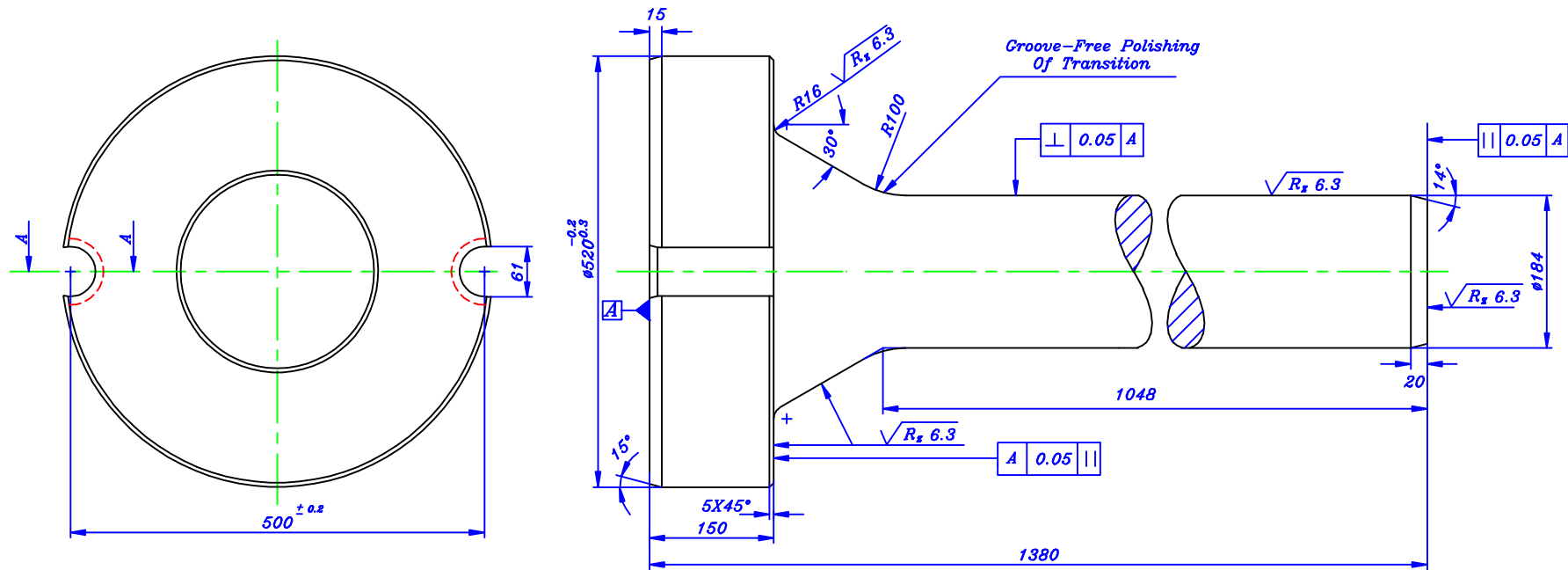


Sec A-A

Heat treated to 1650-1750 N/mm<sup>2</sup>

$\sqrt{R_z 25}$  ( $\sqrt{R_z 6.3}$ )


Machine: 5-130,140		Factory: Extrusion		Sheet: 1
Weight: 752 Kg		Part Name: Stem		1 Sheets:
79	Date	Name	Reference Drawing No:	Scale: 1:5
drawn	3.3	K. Ebrahimi	5011020-06202	
Checked		H. Baganadeh	Drawing No:	Work QTY. Part NO.
Approved		A. Alinaghjourn	P5000-0800	1 1
		Material: 1.2367		Min. Stock: 1
		SHAHID BAHONAR COPPER INDUSTRIES CO.		



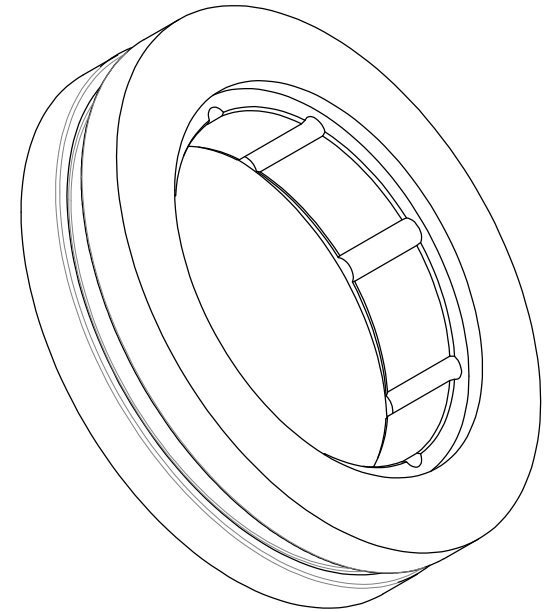
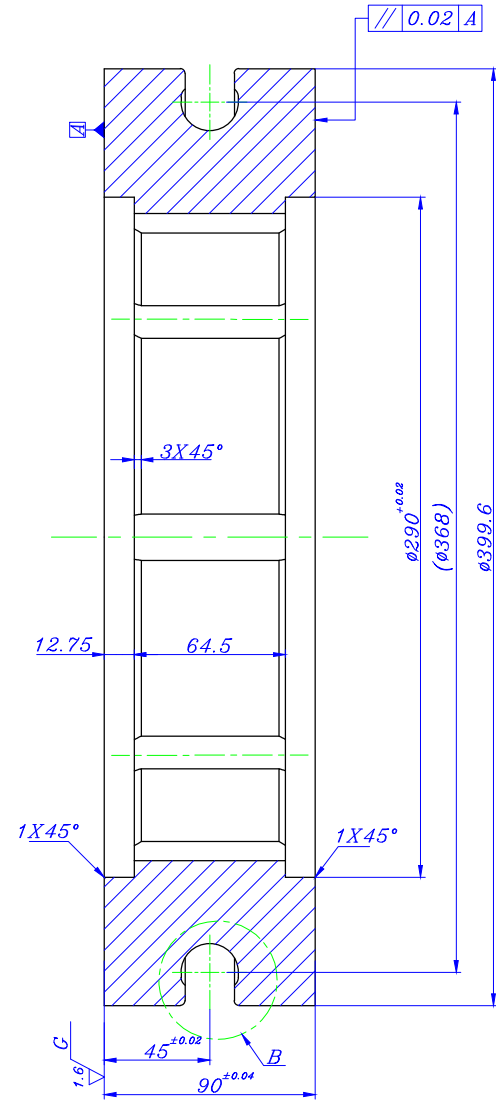
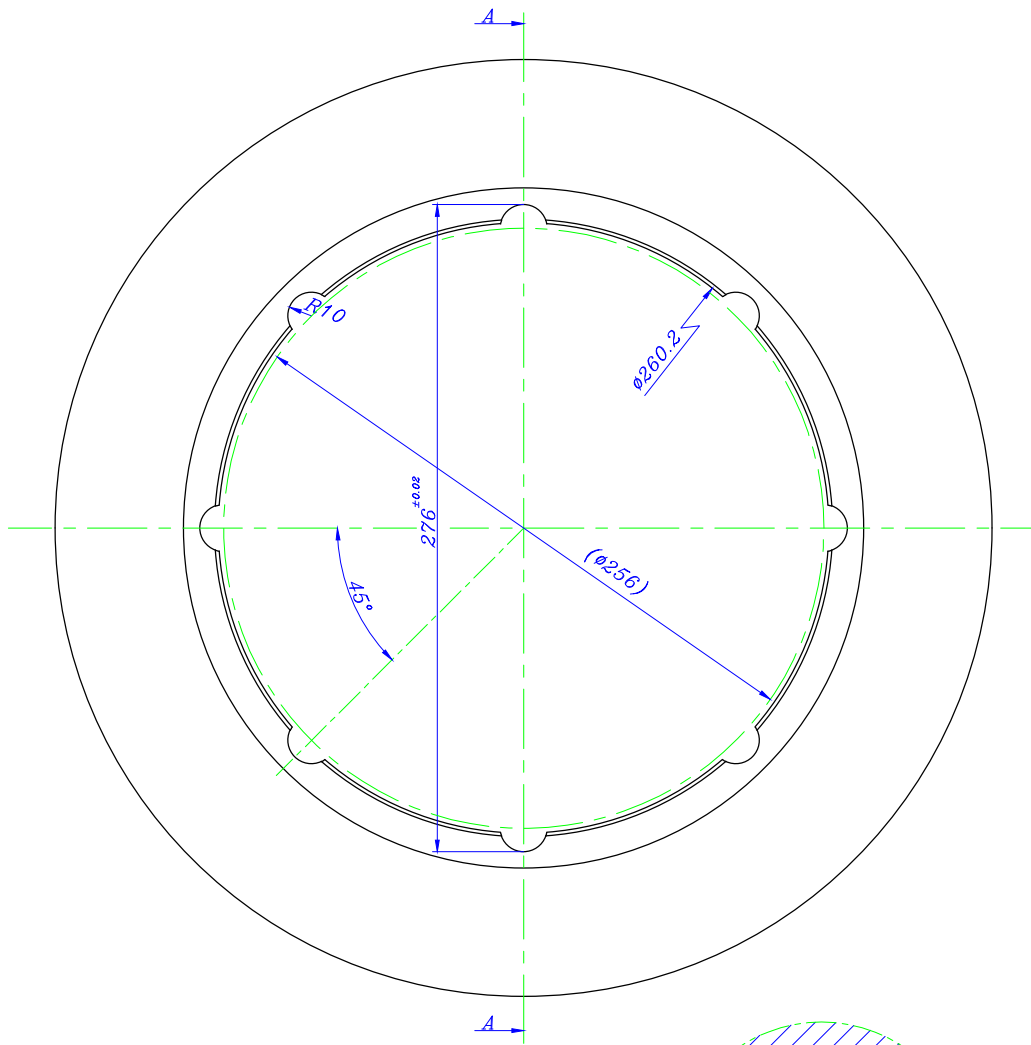
Sec A-A

Heat treated to 1650-1750N/mm<sup>2</sup>

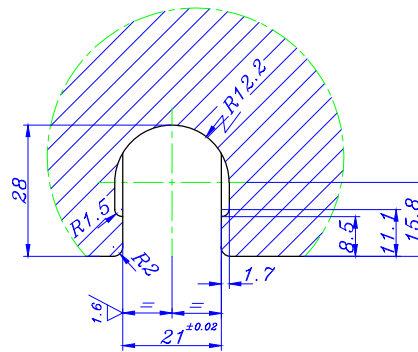
$\sqrt{R_z 25}$  ( $\sqrt{R_z 6.3}$ )

Machine: 5-130,140	Factory: Extrusion	Sheet: 1
Weight: 620kg	Part Name: Stem	Sheets: 1
79 drawn	Date 3.3	Name K. Ebrahimi
Checked	H. Bragandeh	Reference Drawing No: 5011020-06202
Approved	A. Alinaghjourn	Drawing No: P5000-0855
		Work QTY. Part NO. 1 1
	Material: 1.2367	Min. Stock: 1
 <b>SHAHID BAHONAR COPPER INDUSTRIES CO.</b>		

Permissible Variations  
in untoleranced dimensions  
DIN ISO 2768-1 Fine



Isometric view




Detail : B  
Scale 1:1

Section A-A

3.2/ (▽) 1.6/ (▽)

Quenched and tempered for  
hardness : 46-48 HRC

Factory: Busbar	Machine: Conform	Sheet: 1
Material: 1.2344 Forged	Hardness:	1 Sheets:
01 Date	Name	Sub assembly name:
drawn 07.18	Mj. Peyfar	Scale: 1:2
Checked	M. Niknafs	Refrence drawing NO.:
Approved	H. Rezaei	Part NO.:
		Work QTY.:
		Min. Stock:
Drawing NO.: P9000-0019		SHAHID BAHONAR COPPER INDUSTRIES CO.

Permissible Variations  
in untoleranced dimensions  
DIN ISO 2768-1 Fine

First Angle Project

ALL RIGHTS IN THIS DRAWING ARE RESERVED TO US